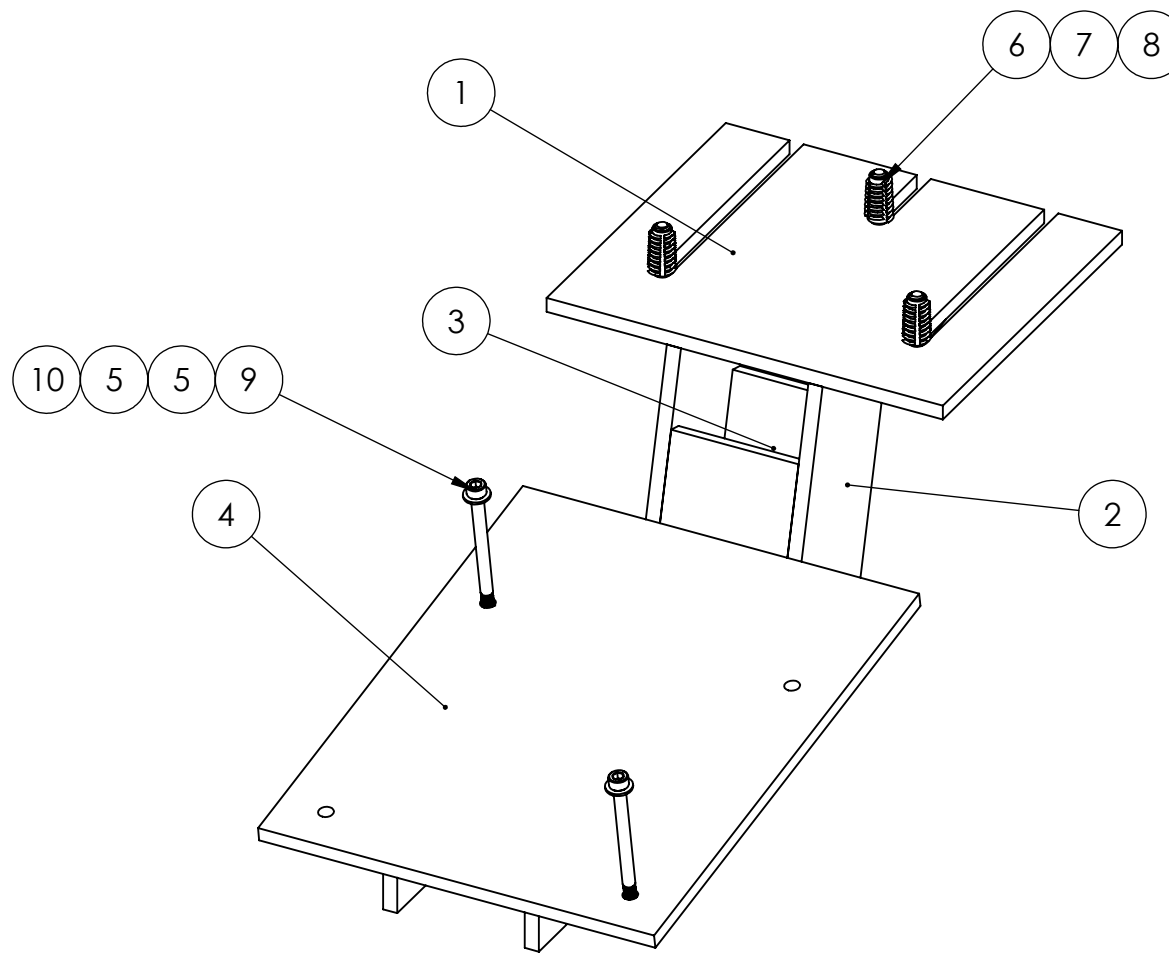
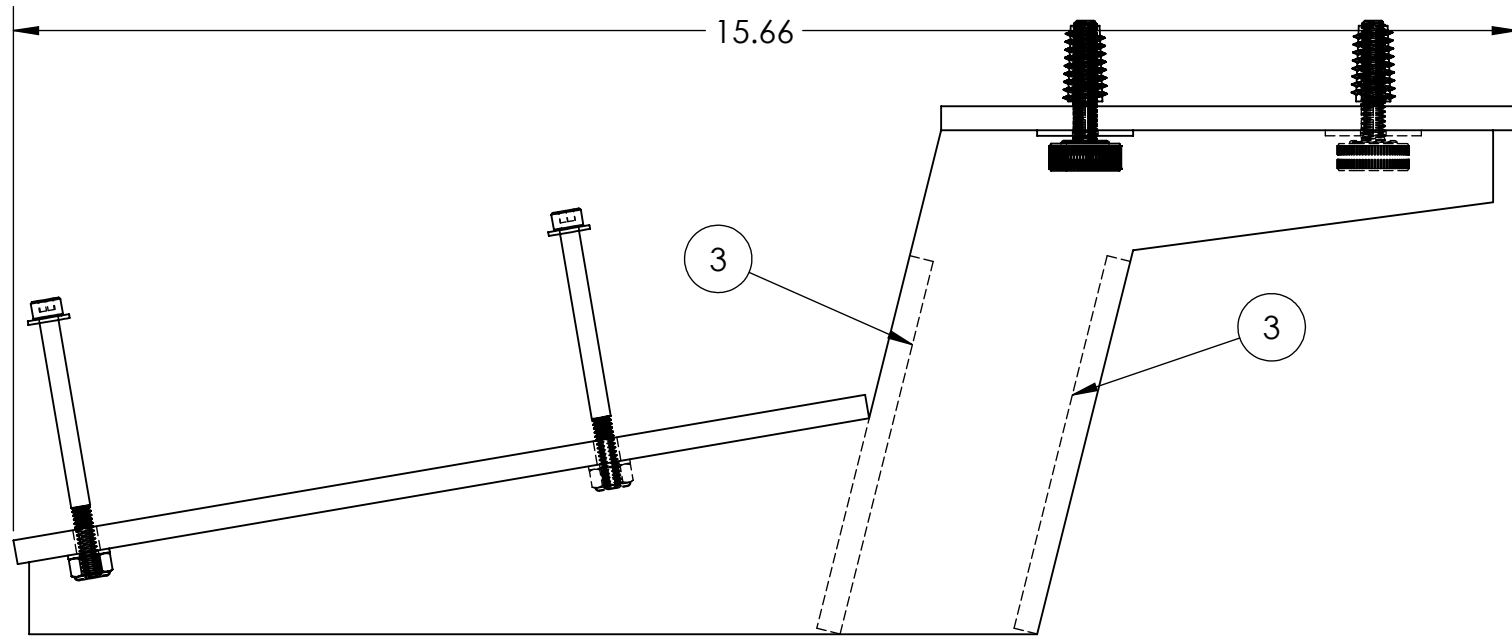
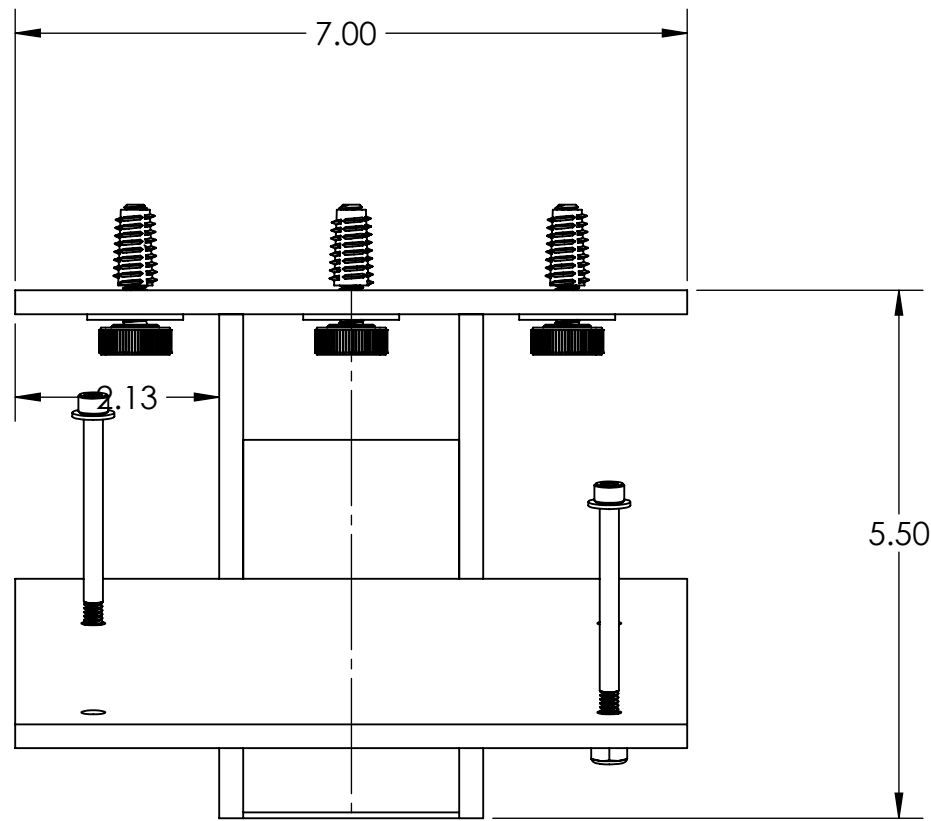


PARTS LIST			
ITEM NO	QTY	PART NUMBER	DESCRIPTION
1	1	HM001	PLATE 2A
2	2	HM002	GUSSET
3	2	HM003	CROSS PLATE
4	1	HM004	PLATE 2B
5	4	92141A011	#10 WASHER
6	3	92105A676	1/4-20 SOFT WOOD THREADED INSERT
7	3	91185A418	1/4-20 x 1.25 THUMB SCREW
8	3	90377A157	1/4 X 1.0 FLAT WASHER
9	2	90128A235	10-24 X 2.75 SHCS
10	2	90631A011	#10 NYLOC

ASSEMBLY: ASSEMBLE STRUCTURE WITH WOOD GLUE
 FINISH: PAINT OR STAIN AS DESSIED



ALL DIMENSIONS ARE IN INCHES
 UNLESS OTHERWISE NOTED

HighlandWolf
 www.highlandwolf.com

HOTAS MOUNT

Drawn By: Dana H.

Printed: 6/3/2016 3:37:42 PM

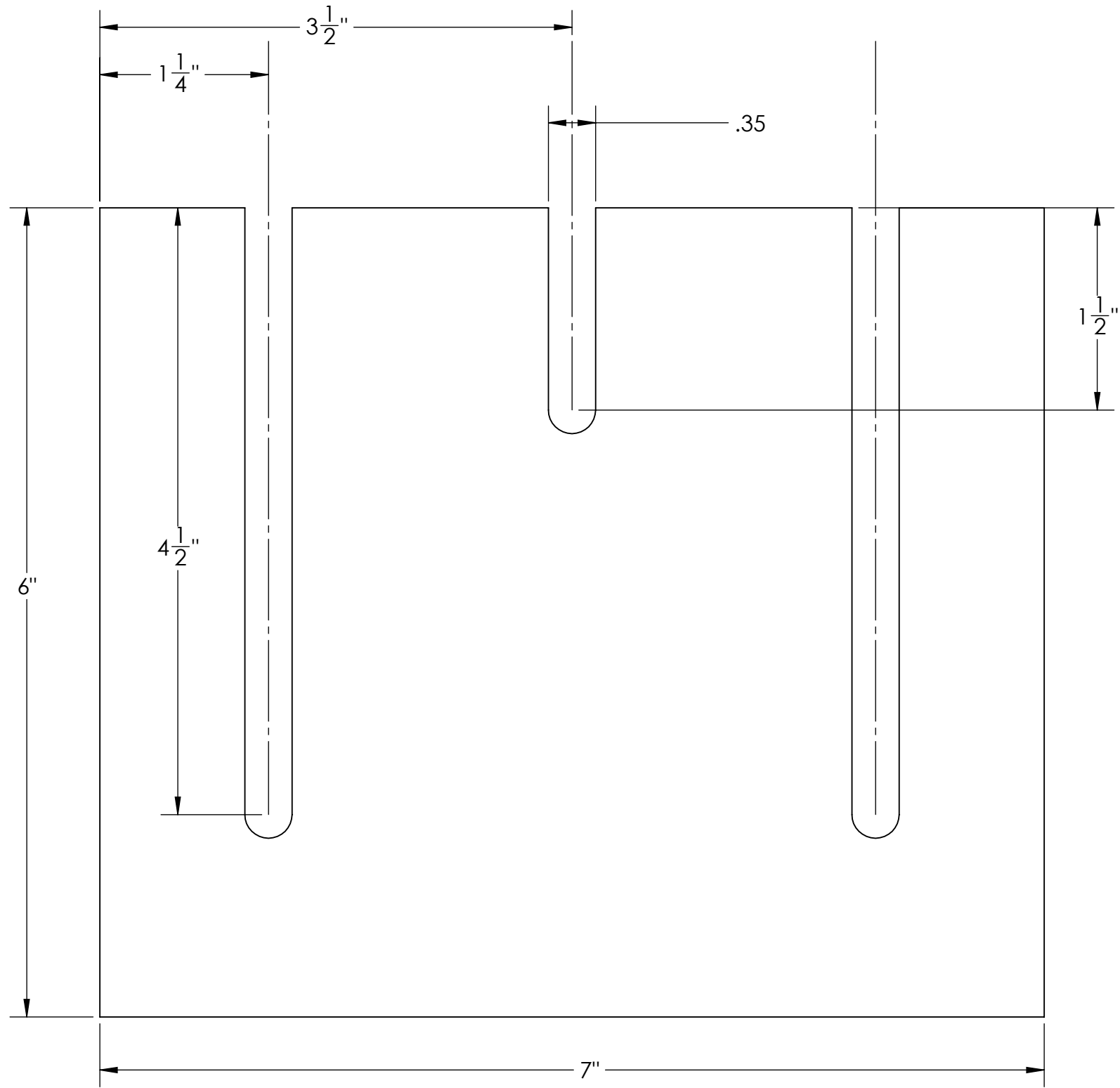
Dwg. No. HM000

Sheet: 1 of 1

NOTICE TO ALL PERSONS RECEIVING THIS DRAWING
 This drawing is conditionally issued, and neither receipt nor possession thereof confers or transfers any right in, or license to the subject matter of the drawing, design, or the technical information shown thereon.

MATERIAL: MAKE FROM AVAILABLE 1/4" PLYWOOD STOCK

FINISH: NONE



INTERPRET PER ASME Y14.5-2009

TOLERANCES UNLESS OTHERWISE SPECIFIED:

X.X ± .1 FRACTIONAL:
X.XX ± .01 ± 1/16
X.XXX ± .005
∠ ± .5°

ALL DIMENSIONS ARE IN INCHES UNLESS OTHERWISE NOTED

NOTICE TO ALL PERSONS RECEIVING THIS DRAWING
This drawing is conditionally issued, and neither receipt nor possession thereof confers or transfers any right in, or license to the subject matter of the drawing, design, or the technical information shown thereon.

PLATE 2A

Drawn By: Dana Howard

Printed: 6/3/2016 3:38:32 PM

Dwg. No. HM001

Sheet: 1 of 1

HighlandWolf
www.highlandwolf.com

8

7

6

5

4

3

2

1

D

C

B

A

D

C

B

A

8

7

6

5

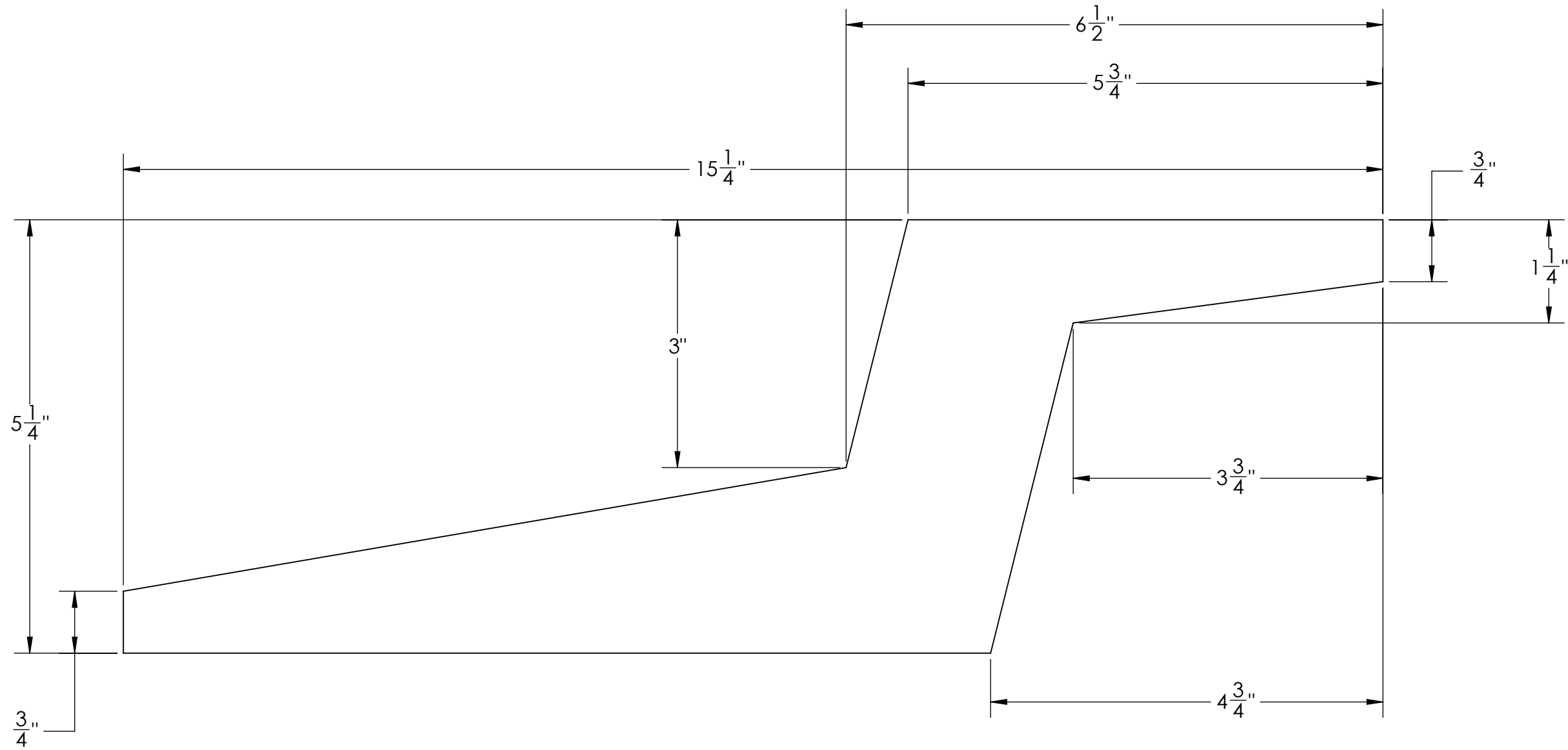
4

3

2

1

MATERIAL: MAKE FROM AVAILABLE 1/4" PLYWOOD STOCK
 FINISH: NONE



INTERPRET PER ASME Y14.5-2009	
TOLERANCES UNLESS OTHERWISE SPECIFIED:	
X.X ± .1	FRACTIONAL:
X.XX ± .01	± 1/16
X.XXX ± .005	
∠ ± .5°	
ALL DIMENSIONS ARE IN INCHES UNLESS OTHERWISE NOTED	

NOTICE TO ALL PERSONS RECEIVING THIS DRAWING
 This drawing is conditionally issued, and neither receipt nor possession thereof confers or transfers any right in, or license to the subject matter of the drawing, design, or the technical information shown thereon.

GUSSET

HighlandWolf
 www.highlandwolf.com

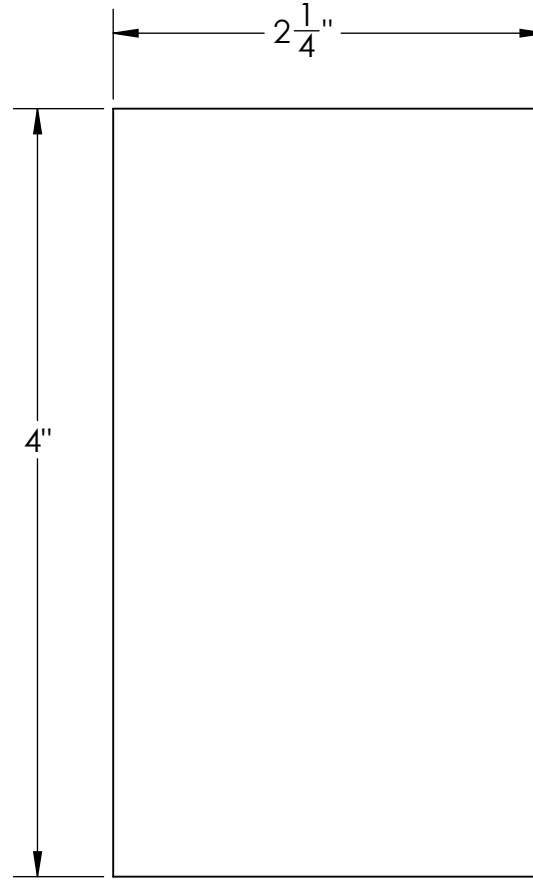
Drawn By: **Dana Howard**

Printed: 6/2/2016 3:27:54 PM

Dwg. No. **HM002**

Sheet: **1** of **1**

MATERIAL: MADE FROM AVAILABLE 1/4" PLYWOOD STOCK
 FINISH: NONE



INTERPRET PER ASME Y14.5-2009	
TOLERANCES UNLESS OTHERWISE SPECIFIED:	
X.X ± .1	FRACTIONAL:
X.XX ± .01	± 1/16
X.XXX ± .005	
∠ ± .5°	
ALL DIMENSIONS ARE IN INCHES UNLESS OTHERWISE NOTED	

NOTICE TO ALL PERSONS RECEIVING THIS DRAWING
 This drawing is conditionally issued, and neither receipt nor possession thereof confers or transfers any right in, or license to the subject matter of the drawing, design, or the technical information shown thereon.

CROSS PLATE

Drawn By: **Dana Howard**

Printed: 6/2/2016 3:26:40 PM

Dwg. No. **HM003**
 Sheet: 1 of 1

HighlandWolf
 www.highlandwolf.com

D

C

B

A

D

C

B

A

8

7

6

5

4

3

2

1

8

7

6

5

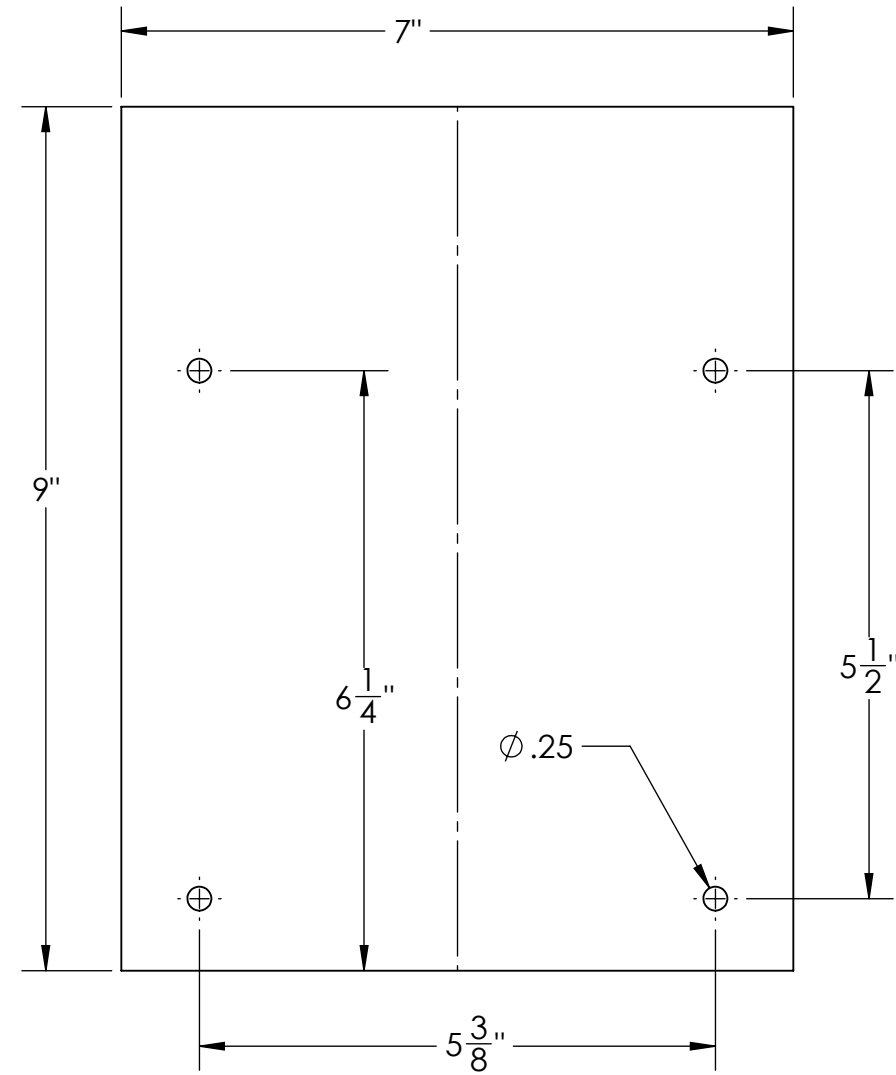
4

3

2

1

MATERIAL: MAKE FROM AVAILABLE 1/4" PLYWOOD STOCK
 FINISH: NONE



INTERPRET PER ASME Y14.5-2009

TOLERANCES UNLESS OTHERWISE SPECIFIED:

X.X ± .1	FRACTIONAL:
X.XX ± .01	± 1/16
X.XXX ± .005	
∠ ± .5°	

ALL DIMENSIONS ARE IN INCHES UNLESS OTHERWISE NOTED

NOTICE TO ALL PERSONS RECEIVING THIS DRAWING
 This drawing is conditionally issued, and neither receipt nor possession thereof confers or transfers any right in, or license to the subject matter of the drawing, design, or the technical information shown thereon.

PLATE 2B

Drawn By: **Dana Howard**

Printed: 6/3/2016 3:50:53 PM

Dwg. No. **HM004**

Sheet: 1 of 1

HighlandWolf
 www.highlandwolf.com